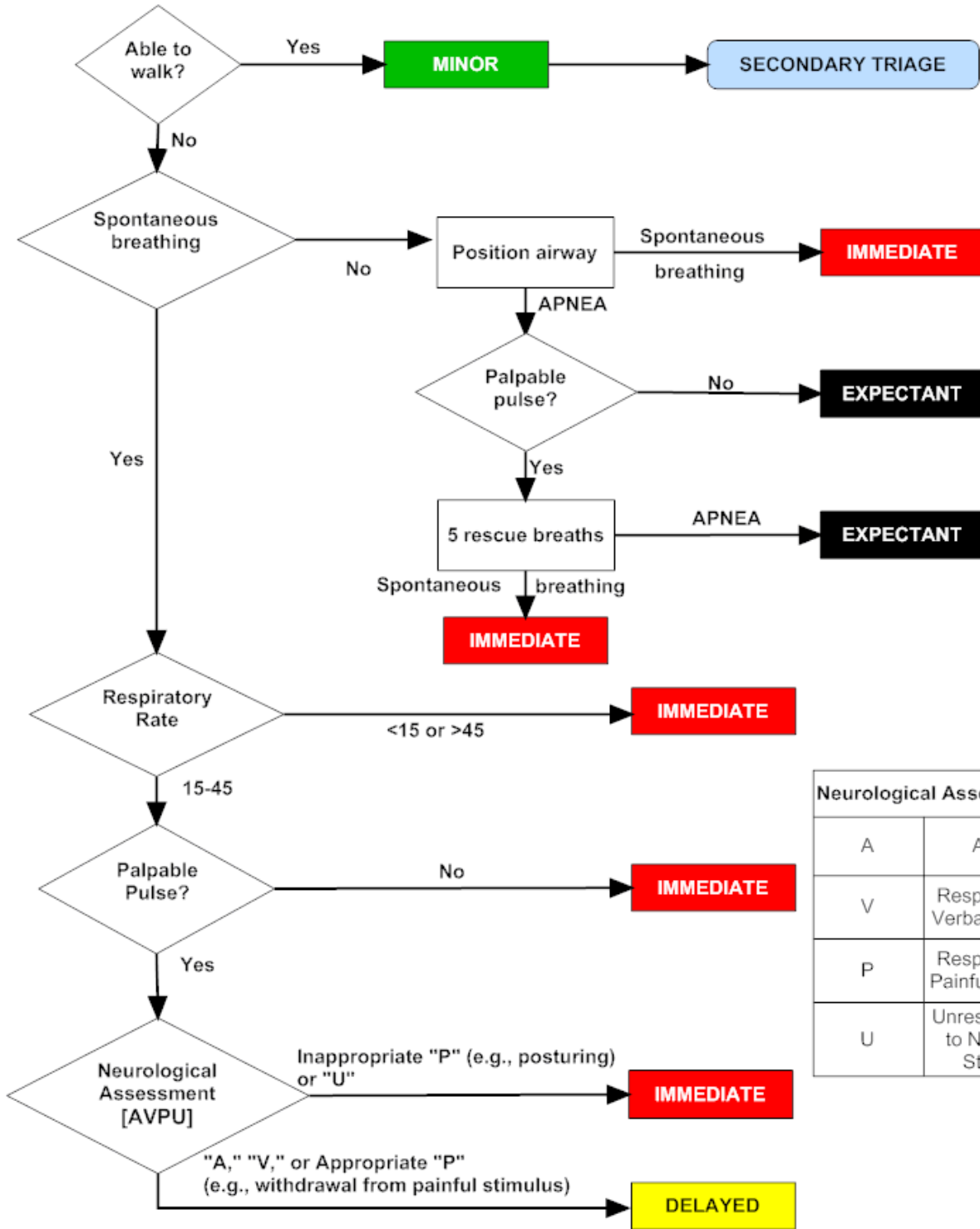


START Triage (Adult Patients)

| START Triage | | | |
|--|--|--|--|
| <i>Assess, Treat, (use bystanders)</i> | | | |
| When you have a color | | | |
| STOP - TAG - MOVE ON | | | |
| M I N O R | D E C E A S E D | -- Move Walking Wounded | |
| | | I M M E D I A T E | -- No RESPIRATIONS after head tilt |
| | | | -- Breathing but UNCONSCIOUS |
| | | | -- Respirations - over 30 |
| | | | -- Perfusion Capillary refill > 2 or NO RADIAL PULSE |
| | | | <i>Control bleeding</i> |
| | | | -- Mental Status Unable to follow simple commands |
| D E L A Y E D | -- Otherwise | | |
| | | REMEMBER: | |
| | | Respirations - 30 | |
| | | Perfusion - 2 | |
| | | Mental Status - Can Do | |

JumpSTART (Pediatric Patients)



| Neurological Assessment | |
|-------------------------|---------------------------------|
| A | Alert |
| V | Responds to Verbal Stimuli |
| P | Responds to Painful Stimuli |
| U | Unresponsive to Noxious Stimuli |

Use JumpSTART if the Patient appears to be a child.

Use an adult system, such as START, if the patient appears to be a young adult.